

ISO 9001:2008



- 1** ANIMAL PLANET
- 2** ISLAND HOPPING
- 3** ADVENTURE SAMUI
- 4** DETOX
- 5** SPA
- 6** YOGA



ANIMAL PLANET

Family Tour

THREE-DAY PROGRAM, US\$385*

Day 1.

Pickup from Samui airport. Your acquaintance with the island will start with the Big Buddha Temple. Samui's most deeply revered sanctuary sits majestically on a small rocky island off Koh Samui's north-eastern corner. Known locally as Wat Phra Yai, its golden, 12-metre Seated Buddha statue was built in 1972 and remains one of the island's most popular attractions. Set on Koh Faan, the Big Buddha temple is reached by a causeway that connects it to the main island. The Big Buddha can be seen at a distance of several kilometres and is often the first landmark people see when arriving in Samui by air. Then will go to the Lad Koh viewpoint to admire the panoramic view of Thong Takien Beach and Chaweng Beach. Continue to Lamai and visit the famous Grandmother and Grandfather rocks. Then head to a monkey school and watch the entertaining monkeys while enjoying refreshing coconut drink. Visit the Mummified Monk, a local and respected monk who requested to keep his body on display as a symbol for

future generations to follow Buddhist teachings. Then you will set off for Namtok Na Muang, or 'Purple Waterfalls', which owe their nickname to the striking purple shade of their rock faces. There are other waterfalls to visit on Koh Samui, but these are considered to be among the most scenic. Na Muang is a popular place for families to relax and swim. Many Samui tours include a refreshing stop at the Na Muang Waterfalls.

Day 2.

The largest amusement park on Samui is proud to present performances featuring the island's most loveable, fearsome, and chatty creatures - elephants, monkeys, crocodiles, snakes, and parrots! Take home a memory – and a photo, while you ride the elephants and hold a baby tiger cub. The tour program includes a visit to the mini-zoo, animal feeding, elephant calf bathing, elephant show, monkey show, crocodile show, and a Thai cuisine cooking class. Return to the hotel.

Day 3.

On this day you will set off to explore adjacent islands. Koh Tao – meaning 'Turtle Island' – lives up to its name, being the scuba diving destination of choice in Thailand. The perfect white-sand beaches which ring the hilly 21 km island are surrounded by the crystal-clear waters of the Gulf of Siam. The vibrant coral reefs there are home to a wide range of exciting and colourful marine creatures, including turtles, naturally. Located 55 km to the north of Koh Samui, this small island was really 'discovered' in the early 1980s. Now it offers a wide selection of hotels, ranging from budget-friendly guesthouses and beach bungalows to gorgeous five-star resorts. The choice of restaurants and nightlife venues has also been constantly growing, to the point that there is now something to fit any every taste. So far from civilization while still being relatively easily reached, it is the idyllic tropical island paradise. Transfer to Samui airport.

AGENCY FEE: 10%

Prices are quoted in USD per person. Minimum PAX: 2. The company reserves the right to change the tour schedule.

* Accommodation is not included. Please contact us for more details.



ISLAND HOPPING

THREE-DAY PROGRAM, US\$330*

Day 1.

Pickup from Samui airport. Your acquaintance with the island will start with the Big Buddha Temple. Samui's most deeply revered sanctuary sits majestically on a small rocky island off Koh Samui's north-eastern corner. Known locally as Wat Phra Yai, its golden, 12-metre Seated Buddha statue was built in 1972 and remains one of the island's most popular attractions. Set on Koh Faan, the Big Buddha temple is reached by a causeway that connects it to the main island. The Big Buddha can be seen at a distance of several kilometres and is often the first landmark people see when arriving in Samui by air. Then will go to the Lad Koh viewpoint to admire the panoramic view of Thong Takien Beach and Chaweng Beach. Continue to Lamai and visit the famous Grandmother and Grandfather rocks. Then head to a monkey school and watch the entertaining monkeys while enjoying refreshing coconut drink. Visit the Mummified Monk, a local and respected monk who requested to keep his body on display as a symbol for

future generations to follow Buddhist teachings. Then you will set off for Namtok Na Muang, or 'Purple Waterfalls', which owe their nickname to the striking purple shade of their rock faces. There are other waterfalls to visit on Koh Samui, but these are considered to be among the most scenic. Na Muang is a popular place for families to relax and swim. Many Samui tours include a refreshing stop at the Na Muang Waterfalls.

Day 2.

Welcome to the Ang Thong National Marine Park, a pristine archipelago of 42 islands in the Gulf of Thailand. It features towering limestone mountains, thick jungle, white-sand beaches, waterfalls and hidden coves and lakes to explore. Within sight of Koh Samui, the Ang Thong park is a protected area of more than 100 km² of land and sea. It is home to a rich variety of exotic wildlife and sea creatures. Snorkeling, hiking, sea kayaking, diving, and simply relaxing are the main activities to enjoy in Ang Thong.

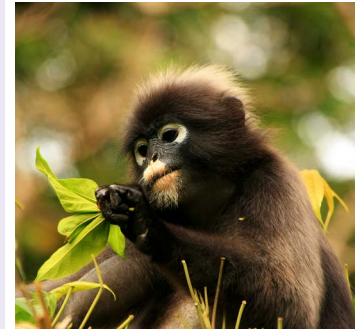
Day 3.

On this day you will set off to explore adjacent islands. Koh Tao – meaning 'Turtle Island' – lives up to its name, being the scuba diving destination of choice in Thailand. The perfect white-sand beaches which ring the hilly 21 km island are surrounded by the crystal-clear waters of the Gulf of Siam. The vibrant coral reefs there are home to a wide range of exciting and colourful marine creatures, including turtles, naturally. Located 55 km to the north of Koh Samui, this small island was really 'discovered' in the early 1980s. Now it offers a wide selection of hotels, ranging from budget-friendly guesthouses and beach bungalows to gorgeous five-star resorts. The choice of restaurants and nightlife venues has also been constantly growing, to the point that there is now something to fit any every taste. So far from civilization while still being relatively easily reached, it is the idyllic tropical island paradise. Transfer to Samui airport.

AGENCY FEE: 10%

Prices are quoted in USD per person. Minimum PAX: 2. The company reserves the right to change the tour schedule.

* Accommodation is not included. Please contact us for more details.



ADVENTURE SAMUI

THREE-DAY PROGRAM, US\$378*

Day 1.

Pickup from Samui airport. Your acquaintance with the island will start with the Big Buddha Temple. Samui's most deeply revered sanctuary sits majestically on a small rocky island off Koh Samui's north-eastern corner. Known locally as Wat Phra Yai, its golden, 12-metre Seated Buddha statue was built in 1972 and remains one of the island's most popular attractions. Set on Koh Faan, the Big Buddha temple is reached by a causeway that connects it to the main island. The Big Buddha can be seen at a distance of several kilometres and is often the first landmark people see when arriving in Samui by air. Then will go to the Lad Koh viewpoint to admire the panoramic view of Thong Takien Beach and Chaweng Beach. Continue to Lamai and visit the famous Grandmother and Grandfather rocks. Then head to a monkey school and watch the entertaining monkeys while enjoying refreshing coconut drink. Visit the Mummified Monk, a local and respected monk who requested to keep his body on display as a symbol for future generations to follow Buddhist teachings. Then you will set off for Namtok Na Muang, or 'Purple Waterfalls', which owe their nickname to the striking purple shade of their rock faces. There are other waterfalls to visit on Koh Samui, but these are considered to be among the most scenic. Na Muang is a popular place for families to relax and swim. Many Samui tours include a refreshing stop at the Na Muang Waterfalls.

Day 2.

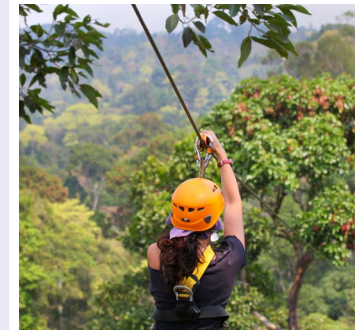
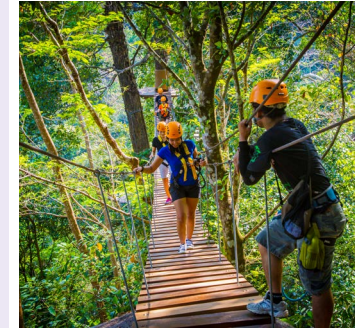
Listed as an Ecotourism option, this 2000-meter Jungle Cableway on Koh Samui is only for those wishing to be at one with nature. Donning special gear, participants connect themselves to interconnected ropes by carabiners, pushing themselves off platforms installed along tree limbs as they make their way around the jungle to the next platform. Experienced instructors wait on each platform, ensuring the proper handling of equipment and compliance with safety measures, and providing competent and timely assistance in case of need. From a bird's eye view, participants will enjoy the local wildlife without disturbing the ecosystem, take in fascinating views of impenetrable jungles, peek out over the tops of age-old trees, and watch as the amazing beauty of a waterfall opens before their eyes.

Day 3.

Jeep tour, Grandfather and Grandmother Rocks, Samret and Khunaram temples, magic garden of stones, elephant farm, elephant rides, animal show, swimming in a waterfall, with lunch provided. The excursion starts with a visit to one of the most famous attractions on Koh Samui – the Grandfather (Hin Ta) and Grandmother (Hin Yai) Rocks. The legend has it that a ship carrying an elderly couple crashed here, and their bodies turned into clumps resembling male and female genitalia. Next is a visit to the ancient temple of Samret, where the

statue of a white marble Buddha sits next to a huge tree more than 500 years old. On a neighboring elephant farm, you will take a half-hour elephant ride, followed by a show featuring big and small elephants, monkeys and crocodiles. Afterwards you will take a walk through the jungles to the 80-meter-tall Na Muang II waterfall, where you may dip in its invigorating waters.

The route then takes riders past banana, pineapple, coconut, and rubber plantations to the Mummified Monk Temple, where the mummified body of a monk in a glass sarcophagus is waiting to say hi. Not far from the island's highest mountain, a stroll through the Magic Buddha Garden awaits you. An amazing garden of stones, created by talented Nim Thongsuka, is full of pavilions, small caves, and streams. You will also see the crypt, where Nima Thongsuka and his wife are buried. The tour culminates with a climb to the highest peak on Koh Samui, that provides a mesmerizing view of the entire island. Transfer to Samui airport.



AGENCY FEE: 10%

Prices are quoted in USD per person. Minimum PAX: 2. The company reserves the right to change the tour schedule.

* Accommodation is not included. Please contact us for more details.

DETOX

THREE-DAY PROGRAM, US\$1 150*

Day 1.
 Pickup from Samui airport. Individual wellness consultation with a Bio Impedance Analysis. Colon hydrotherapy. Infrared sauna therapy. Oil Massage

Day 2.
 Colon hydrotherapy. Thai stretch massage. Pilates

Day 3.
 Manual lymphatic drainage massage therapy. Final detox consultation and take-home guidelines. Magnesium foot soak. Transfer to Samui airport.



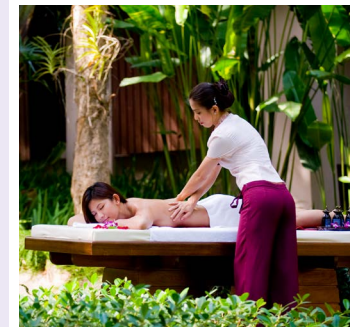
SPA

THREE-DAY PROGRAM, US\$886*

Day 1.
 Pickup from Samui airport. Individual wellness consultation with a Bio Impedance Analysis. Welcome SPA ritual. Back, neck, shoulder massage.

Day 2.
 Herbal heat compress. Body scrub massage (aroma, Swedish or Thai at your choice). Pilates.

Day 3.
 Pevonia radiance facial treatment. Transfer to Samui airport.



YOGA

FIVE-DAY PROGRAM, US\$1250*

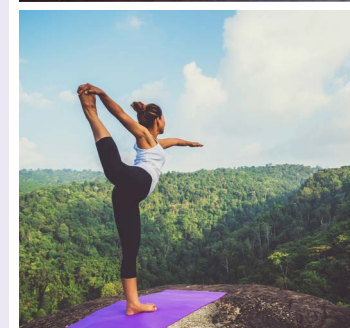
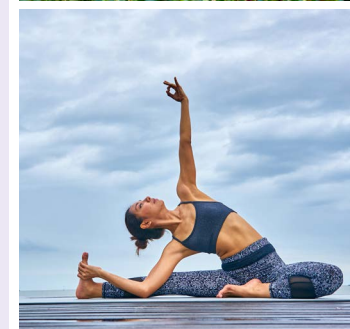
Day 1.
 Pickup from Samui airport. Individual wellness consultation with a Bio Impedance Analysis. Aroma massage. Yoga class. Meditation.

Day 2.
 Thai Stretch massage. Pilates. Yoga class. Meditation.

Day 3.
 Aroma massage. Pilates. Yoga class. Meditation.

Day 4.
 Thai Stretch massage. Pilates. Yoga class. Meditation.

Day 5.
 Thai Stretch massage. Yoga class. Meditation. Transfer to Samui airport.



AGENCY FEE: 10%

Prices are quoted in USD per person. Minimum PAX: 2. The company reserves the right to change the tour schedule.

* Accommodation and full-board meals are included.